



We create chemistry

PG8 project: INFO Brochure Quays and Jetties works BASF Antwerp

February 2023

Info brochure

This brochure is written with the purpose of informing barge masters and crew on EU inland barging fleet on the construction works are BASF Antwerp B3 dock.



Figuur 2: Overzicht PT6 – Kaaimuurherstellingen



Figuur 3 - 7: schadebeeld kaaimuur
Bron: BASF Antwerpen

Why?

On several places the walls of the quays are in bad condition.

What?

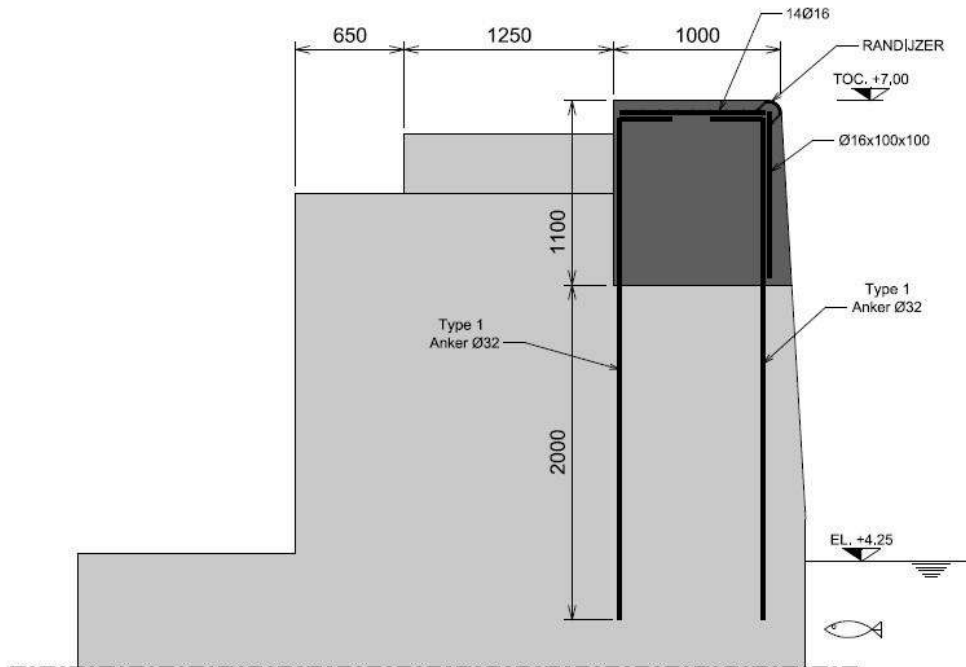
Top part of the concrete will be renewed. New emergency ladders will be placed and bollards will be repaired.

How?

Removing of old concrete by machinery on a pontoon or from ashore. Pouting new concrete afterwards.



Info brochure



- The dark grey upper part will be renewed as seen in the picture above.

Figuur 8: te herstellen deel
Bron: BASF Antwerpen

Info brochure

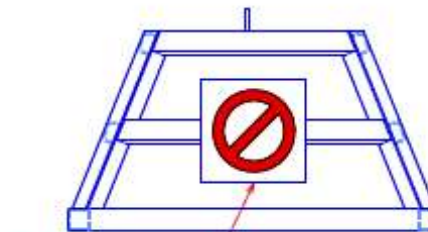
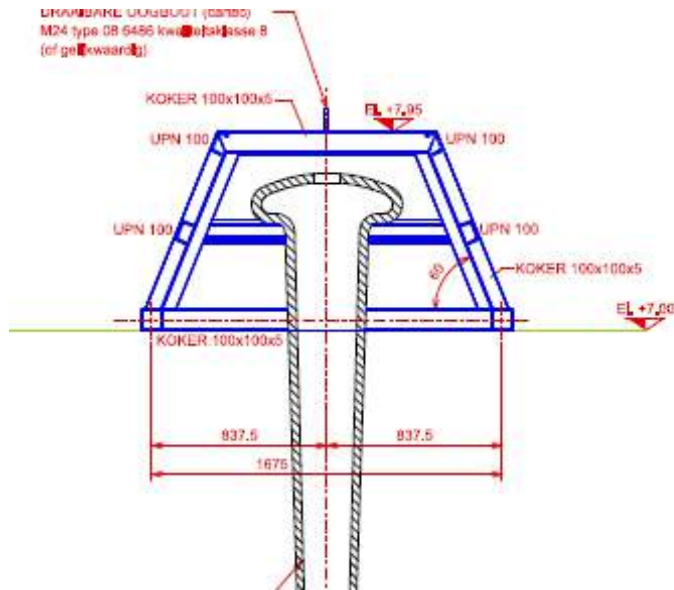
What will this mean for my barge and my crew?

- It will require to use the AFT or FORWARD manifold, as there will not always be enough space in front or aft of your barge to use the middle manifold.
- It may require to use a mooring pattern whereby the mooring ropes are put 'inboard' as not always all bollards ashore will be available.
- It will require extra attention for your crew when walking ashore to put the mooring lines, especially during the nighttime.

Info brochure

Points of attention:

- Bollards which cannot be used will have a 'hood' on top of them. These bollards cannot be used because the concrete has to harden. Under no circumstances it is allowed to put a mooring ropes on these bollards.



AANZICHT

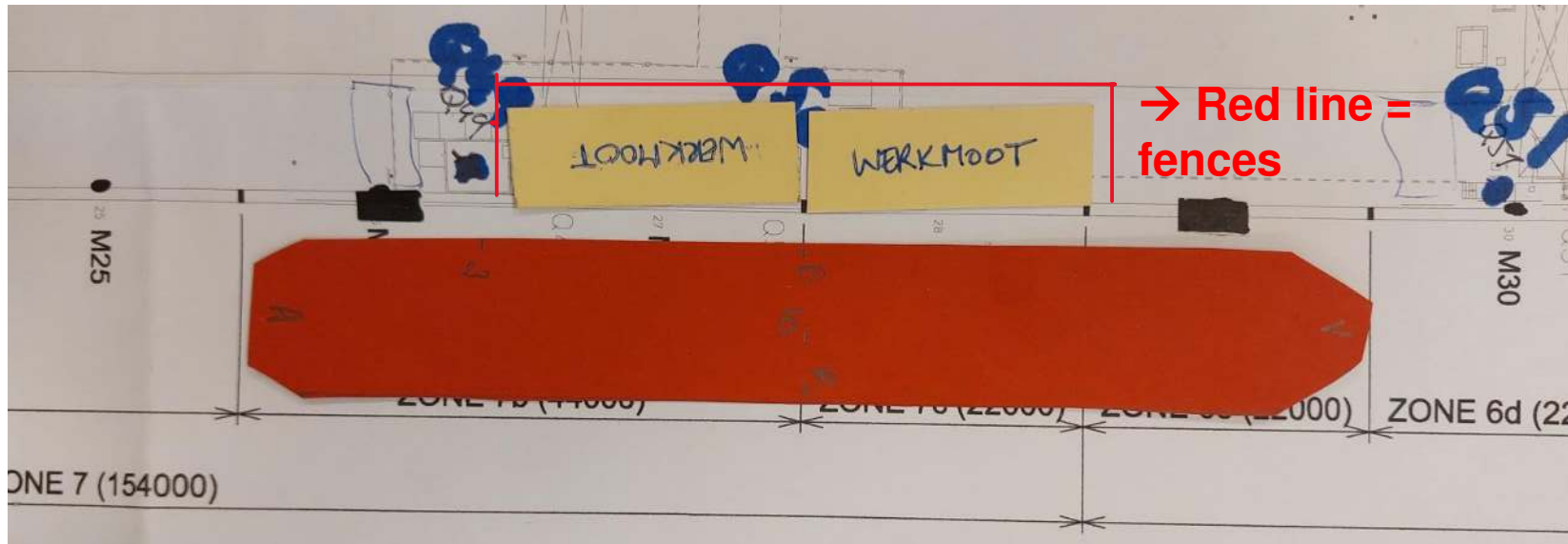


3D VIEW

Info brochure

Points of attention:

- In some cases the mooring of the barge will be in such a way that parts of unfinished quay will be inbetween. Please see below example of such situation. The yellow parts are construction parts. The work area will always be enclosed by fences. However it is advised not to trespass these fences at any time.



Info brochure

Points of attention:

- ADN / National and port regulations should always be complied with. If this is not possible, it is advised to inform your company and/or BASF immediately.
- If things are unsafe, make use of the Stop Work reflex.
- When workponton is in the way or you cannot moor or unmoor properly call the BASF Central Tankfarm on VHF 5



We create chemistry